

MULTI- LAYERED

MORE COMPLETE BARRIER PROTECTION

CYGNUS® Matrix is a complete dehydrated placental allograft that contains all native tissue layers (amnion with spongy layer and chorion).¹ It provides a protective barrier to support the prevention of adhesions and an optimal environment for healing.¹⁻⁵

As a multi-layered placental allograft, CYGNUS Matrix retains the ECM scaffold, collagen, hyaluronic acid, growth factors, and cytokines.^{3,4,6} It is ideal for a wide range of wounds and surgical procedures and is shelf-stable and convenient to use.¹



THE MULTI-LAYERED DIFFERENCE

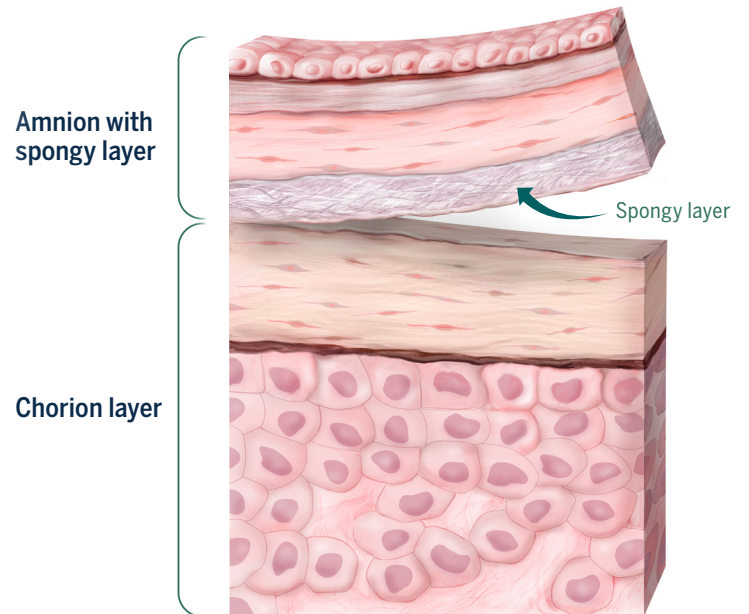
CYGNUS® Matrix contains all native tissue layers that are never delaminated^{5,6}

CYGNUS Matrix Layers

AMNION LAYER	NATIVE TISSUE	CYGNUS MATRIX
Epithelium	✓	✓
Basement membrane	✓	✓
Compact layer	✓	✓
Fibroblast layer	✓	✓
Spongy layer	✓	✓

CHORION LAYER	NATIVE TISSUE	CYGNUS MATRIX
Reticular layer	✓	✓
Basement membrane	✓	✓
Trophoblast layer	✓	✓

Native Placental Tissue Layers

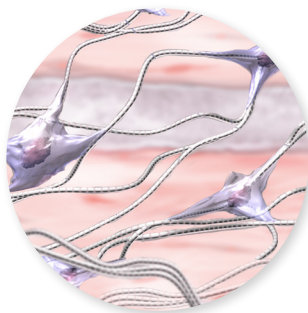


By retaining all native layers, CYGNUS Matrix is up to 4X thicker than the single amnion layer⁷

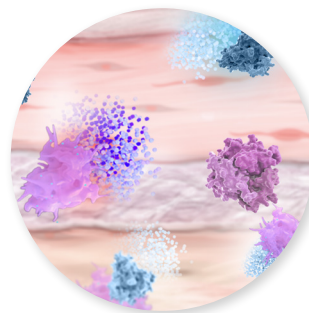
CYGNUS MATRIX SUPPORTS HEALING

- Provides a protective barrier and ECM scaffold to support the body's ability to repair underlying damaged tissue, such as acute and chronic wounds^{1,3}
- Provides an effective physical barrier that helps maintain separate tissue planes for surgical procedures^{1,2}

ECM Proteins (Hyaluronic Acid & Collagen)



Growth Factors & Cytokines

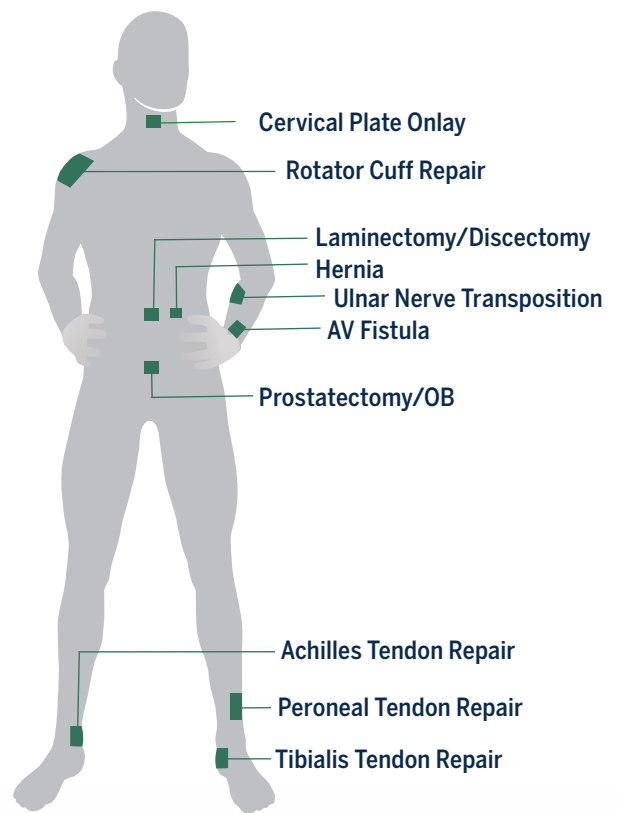
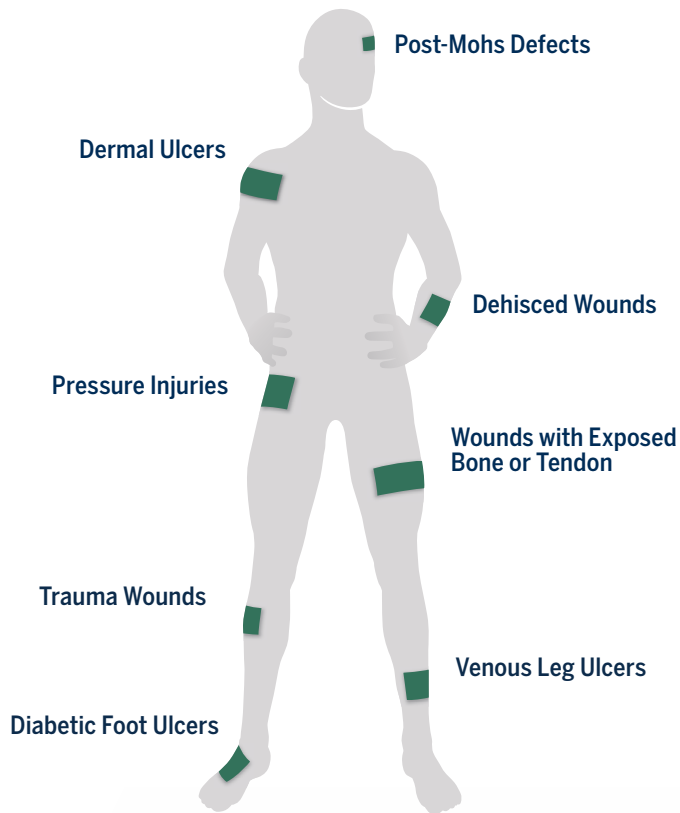


**TESTING HAS CONFIRMED THAT CYGNUS MATRIX RETAINS
NATIVE COMPONENTS OF PLACENTAL TISSUE⁴⁻⁶**

EASE OF USE FOR A WIDE RANGE OF WOUNDS AND SURGICAL PROCEDURES

Supporting healing for a wide range of partial- and full-thickness acute and chronic wounds^{1,3}

Barrier protection for a variety of surgical procedures,^{1,2} such as:



Convenient and sterilized



Ready-to-use, **ambient temperature storage** (2°C to 30°C)



No prep required,
hydrates *in situ*



E-Beam sterilized for sterility
assurance level (SAL) of 10⁻⁶



5-year shelf life

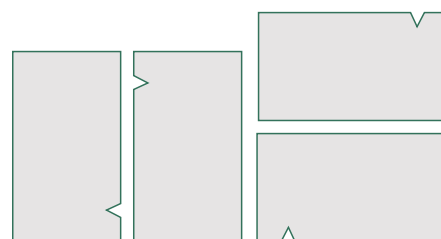
THE MULTI-LAYERED DIFFERENCE



- Provides a more complete barrier protection by retaining all native tissue layers that are never delaminated: amnion with spongy layer and chorion^{1,5,6}
- Retains native components of placental tissue, including the ECM scaffold, hyaluronic acid, collagen, growth factors, and cytokines⁴⁻⁶
- Protects and supports an optimal environment for healing a wide range of head-to-toe wounds, including large wounds^{1,3,4}
- Provides an effective barrier to help maintain separate planes and support the prevention of adhesions for a variety of procedures^{1,2}
- Shelf-stable and convenient to use¹

PRODUCT SIZES AND ORIENTATION

CYGNUS® Matrix Placental Allograft					
PRODUCT NUMBER	PRODUCT	TOTAL SIZE (CM²)	BILLABLE UNITS	HCPCS CODE	UPC
585-009	CYGNUS Matrix 2x3cm	6	6	Q4199	850023053015
585-010	CYGNUS Matrix 4x4cm	16	16	Q4199	850023053039
585-011	CYGNUS Matrix 4x6cm	24	24	Q4199	850023053046



Epithelial layer side up



Please visit the
CYGNUS Matrix
web page

Give your patients the
multi-layered difference
with CYGNUS® Matrix

ECM=extracellular matrix

1. CYGNUS Matrix Tissue Information and Instructions for Use. Vivex Biologics, Inc. 2. Subach BR, Copay AG. *Adv Orthop*. 2015;2015:501202. 3. Brantley JN, Verla TD. *Adv Wound Care*. 2015;4(9):545-559. 4. Data on file. Delcroix Gaetan JR, et al. Preserving the Natural Regenerative Potential of Amniotic Membrane. Vivex Biologics, Inc. 5. Niknejad H, et al. *Eur Cells Mater*. 2008;15:88-99. 6. Data on file. Vivex Biologics, Inc. 7. Helmig R, et al. *Eur J Obstet Gynecol Reprod Biol*. 1993;48(3):183-189.